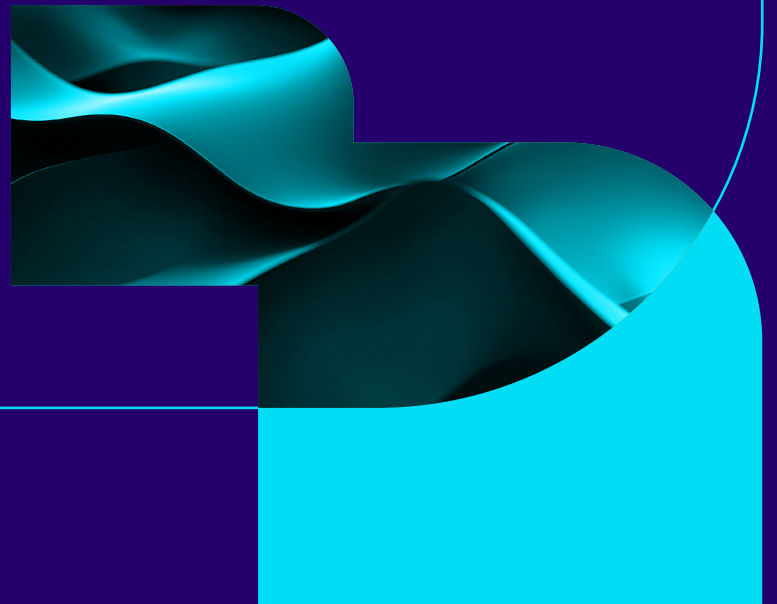




Case Study

# MIGRATING AND SCALING

*With confidence*



## Industry

- Financial solutions

## Products used

- Open source Apache Cassandra®
- Instaclustr Managed Platform

Clear Capital, founded in 2001, leads in property valuation solutions across North America. Their platform accelerates loan decisions, provides real estate insights, and delivers expert property valuations for residential and commercial properties.



## Challenges

- Clear Capital needed a scalable, reliable platform to meet growth and performance demands
- Their engineers prioritized innovation over managing the data layer



## Results

- Migrated Clear Capital to open source Apache Cassandra with zero downtime
- Clear Capital reported improved performance and scalability post-migration

## Scale and reliability

Clear Capital's entire business is founded on data, and while the quality of that data is obviously paramount, so too is the ability of the company to deliver that data consistently and reliably for customers and partners. Some of those customers and partners include the biggest financial institutions in the world.

The challenge for Clear Capital was to build a technology platform that can deliver the scale required for expected growth, and the reliability and performance necessary to deliver on uptime and latency SLAs. The technology platform needed to provide the robustness required to deliver data solutions that are essential to the core business of the company.

## Open source solution

- Leaders in property valuation solutions in the U.S.
- The engineering team wanted to focus on the core aspect of product engineering without having to focus entirely on the data-layer.
- Instaclustr devised the entire migration plan, rollback plan and stayed with Clear Capital at every step of the journey.
- Clear Capital is going through a substantial growth phase and continues to reinvest in future-facing strategies.

*“As we were getting ready to make our data migration, Instaclustr really stayed with us every step of the way. They had the willingness to join us in the very early steps of the journey and to really partner on how this is going to work.”*

**Larry Robinson**, CTO of Clear Capital

## *Managing Cassandra*

While Clear Capital has strong levels of internal expertise and capability in delivering the development and operational levels for their technology platform, the company was looking to partner with a specialist and reliable vendor to support the delivery of core open source components of the data layer, namely Apache Cassandra. Cassandra provides the foundation of the Clear Capital technology platform and the company needed a vendor who could provide support and dependable expertise in running Cassandra at scale.

Clear Capital did not have time to build the in-house capabilities and expertise for managing the complexity of these data layer technologies. The company wanted a partner who could understand the business and the critical aspects of managing data, which was fundamental to the technology platform.

Having a suitable partner would also provide the benefit of having the company's internal engineering team focused on building the technology for its platform that would bring value to customers—ensuring focus on the product and features and capabilities that are important to the customer.

## *Instaclustr partnership*

Clear Capital selected Instaclustr as the specialist and reliable vendor to support the core open source components of the company's technology platform. As a first step, Instaclustr was able to help Clear Capital migrate from a proprietary solution to open source Apache Cassandra with great results. Instaclustr devised the entire migration plan, including rollback processes and was integral in ensuring that there was no downtime through this transition.

The approach to migration and deployment on to the Instaclustr Managed Platform provided the Clear Capital team with confidence—not only were Instaclustr technical operations team members available 24x7, but they also adhered to the SLAs and migration window Clear Capital had for its customers. After migration was complete, Clear Capital was able to scale with confidence while also realizing significant performance improvements.

Clear Capital is going through a substantial growth phase and continues to reinvest in future—facing strategies that are changing and improving the mortgage finance space.

The company is uniquely poised to bring industry leaders together to pioneer solutions that have a wide impact on the U.S. housing market. The Clear Capital technology platform has been built to provide the company with the reliability, scale, and performance required to deliver the future for the company and its customers.

NetApp® Instaclustr specializes in open source technologies for enterprises. Our managed platform streamlines data infrastructure management, backed by experts who ensure ongoing performance, scalability, and optimization. This enables companies to focus on building cutting edge applications at lower costs.